



# The Westonian



A Free Joint Publication by Westonia CRC & Shire of Westonia

Established 1910

VOL. 25/26-11

WESTONIA, NOVEMBER 26TH, 2025

westonia.wa.gov.au

## PROHIBITED BURNING PERIOD

A reminder that from November 1, we are currently in the Prohibited Burning Period (total fire ban) for all Areas.

### No fires are permitted during this period!

The Restricted Burning Period will begin on February 15, 2026. For further details, burning times, requirements and regulations please refer to the Bush Fire Information brochure or download one from our website.



## IMPORTANT CONTACT NUMBERS

As Westonia approaches the Bushfire season the Shire would like to remind community members of Westonia's important contacts.

These contacts can also be found on the rear of the Fire Break Order 2025/26. If community members have not received a copy of the Fire Break Order or have misplaced it, a copy of it is available for downloading and printing from Shire's website.

**FOR ALL EMERGENCIES DIAL 000**

**CHIEF BUSHFIRE CONTROL OFFICER**  
Frank Corsini | 0429 467 042

**DEPUTY BUSHFIRE CONTROL OFFICER**  
Micheal Crook | 0428 449 004



SHIRE OF  
**WESTONIA**  
A vibrant community lifestyle

(08) 9046 7063  
shire@westonia.wa.gov.au  
www.westonia.wa.gov.au

### BUSHFIRE IMPORTANT CONTACTS

#### CHIEF BUSH FIRE CONTROL OFFICER

Frank Corsini | 0429 467 042

#### DEPUTY CHIEF BUSH FIRE CONTROL OFFICER

Michael Crook | 0428 449 004

#### WESTONIA BRIGADE FIRE CONTROL OFFICERS

Frank Corsini | 0429 467 042

Colin Lindley | 0427 467 004

Brad Penny | 0429 467 046

#### WALGOOLAN BRIGADE FIRE CONTROL OFFICERS

Jason Wahlsten | 0429 447 020

Shaun Crees | 0428 447 057

#### WARRALAKIN BRIGADE FIRE CONTROL OFFICERS

Dave Crook | 0428 440 127

Brayden Brennan | 0447 098 662

#### SHIRE FIRE CONTROL OFFICER

Bill Price | 0427 467 063

(General enquiries only. In an emergency call 000)

**HARVEST BAN SMS**  
Call 9046 7063 to subscribe

# Happy Birthday



**28th November: Jackson Kelly  
(Hale)**

**1st December: Ada Barnett**

**3rd December: Steve Hale**

**7th December: Makayla Geier  
(18th), Shaun Crees**

**9th December: Clare Lemoignan**

**17th December: Ned Millington**

**21st December: Mark Crees, John  
Townrow**

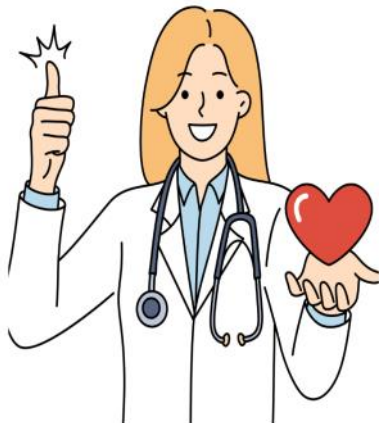
**24th December: Harold Millington**

**26th December: Kay Geier**

**28th December: Dan Barnett**

**30th December: Laura Black**

## ATTENTION PLEASE



**LAURAS LAST VISIT  
WILL BE THURSDAY  
4<sup>TH</sup> DECEMBER  
IF YOU NEED A  
SCRIPT PLEASE CALL  
TO BOOK AN  
APPOINTMENT**



Jocelyn Maddock

Our sincere condolences goes out to the extended family of Jocelyn Maddock, An inspiring woman with a deep passion for history, Jocelyn authored Westonia Wheels of Change, preserving our town's story for future generations.

Jocelyn will be deeply missed by all who knew her. May she rest in peace.

Councillors, Staff and Members of the Westonia Community.



# WESTONIA BOWLS CLUB

Well done to the Men's Pennant team on Saturday 22<sup>nd</sup> November on defeating Bruce Rock 81, 7 points to Bruce Rock 70, 1 point. In front of an enthusiastic local crowd the boys had their first pennant team win for the season. Without a doubt, this will give them the confidence that it is now up, up and up the ladder.



The ladies are improving all the time and were just narrowly defeated by Corrigin in the aggregate with both sides recording a rink win. Unfortunately the ladies have had to forfeit their next game due to four of their numbers being unavailable for selection for Wednesday 26<sup>th</sup>.

Sunday social bowls is still attracting a number of spectators and players. With the somewhat unpredictable and unseasonal weather we are all so grateful for the stadium roof over the bowling green.

The York Bowling Club has reached out to the Westonia Wanderers and have tentatively booked the 1<sup>st</sup> of February to bring up 32 of their members to play against the Wessy bowlers under the roof. This will be an any gender format so please keep the date on your calendar. Having heard of our fantastic facilities the York Bowling Club are looking at emulating them at York.



# SHIRE OF WESTONIA

## FEES AND CHARGES

As per section 6.19 of the Local Government Act 1995 the Council has resolved to amend the Fees and Charges relating to the Support at Home Program as follows.

### SUPPORT AT HOME Price List



|  | RATE     | STANDARD HOURS | NON-STANDARD HOURS (1.25) | SATURDAY (1.5) | SUNDAY (2) | PUBLIC HOLIDAY (2.5) |
|--|----------|----------------|---------------------------|----------------|------------|----------------------|
| <b>Clinical Supports</b>   |          |                |                           |                |            |                      |
| Registered Nurse   | Per hour | \$ 126         | \$ 157                    | \$ 189         | \$ 252     | \$ 315               |
| Nursing Consumables*   |          |                |                           |                |            |                      |
| Allied health and other therapeutic services*  |          |                |                           |                |            |                      |
| <b>Independence Supports</b>   |          |                |                           |                |            |                      |
| Personal Care & Medication Support   | Per hour | \$ 75          | \$ 94                     | \$ 112         | \$ 150     | \$ 187               |
| Individual Social Support & Community Engagement   | Per hour | \$ 75          | \$ 94                     | \$ 112         | \$ 150     | \$ 187               |
| Respite  | Per hour | \$ 75          | \$ 94                     | \$ 112         | \$ 150     | \$ 187               |
| Transport (Direct, Indirect, Taxi/rideshare voucher)*  |          |                |                           |                |            |                      |
| Therapeutic Services for everyday living*  |          |                |                           |                |            |                      |
| <b>Everyday Living Supports</b>  |          |                |                           |                |            |                      |
| Domestic Assistance & Shopping   | Per hour | \$ 75          | \$ 94                     | \$ 112         | \$ 150     | \$ 187               |
| Meal Preparation in Home   | Per hour | \$ 75          | \$ 94                     | \$ 112         | \$ 150     | \$ 187               |
| Home & Garden Maintenance  | Per hour | \$ 75          | \$ 94                     | \$ 112         | \$ 150     | \$ 187               |
| Meal Delivery*   |          |                |                           |                |            |                      |
| <b>Care Management</b>   |          |                |                           |                |            |                      |
| Care Management  | Per hour | \$ 125         | n/a                       | n/a            | n/a        | n/a                  |
| Restorative Care Management  | Per hour | n/a            | n/a                       | n/a            | n/a        | n/a                  |
| (Note* Restorative Care Management fees are charged separately under an approved Restorative Care Plan.) |          |                |                           |                |            |                      |



\* We will provide you with a quote based on your requirements and associated provider rates. Once agreed with your Service Co-ordinator it will be added to your budget.

All prices inclusive of reasonable provider and customer travel. Higher travel requirements will attract an additional quote.

Minimum services charge of 15minute increments.

All prices are effective from 1st of November 2025

| Co-Contributions   | Clinical Service | Independence       | Everyday Living       |
|--|------------------|--------------------|-----------------------|
| Full Pensioner   | 0%               | 5%                 | 17.50%                |
| Part Pensioner & Commonwealth seniors health card eligible | 0%               | Between 5% and 50% | Between 17.5% and 80% |
| Self-funded retiree  | 0%               | 50%                | 80%                   |

Part pension contribution will depend on your income & assets, as assessed by Services Australia. Contributions will be calculated & shared with you as part of your planning & budgeting meeting.

These charges will apply from 1<sup>st</sup> of November 2025.



**ACTIVE FARMERS**  
Powered by  

**The last workout with Emilie will be the Wednesday 17<sup>th</sup> December and will start back up in January**

**IMPORTANT ANOUNCEMENT**

**General Waste Collection Change of Day**

Due to Christmas day falling on a Thursday this year, Avonwaste wish to advise customers that this service will be moved to **TUESDAY the 23<sup>RD</sup> December**





# Christmas Opening Hours



**WEDNESDAY 24TH—8:30AM - 4:30PM**

**THURSDAY 25TH—CLOSED**

**FRIDAY 26TH—CLOSED PAPERS OUT THE FRONT**

**SATURDAY 27TH—CLOSED PAPERS OUT THE FRONT**

**SUNDAY 28TH - CLOSED**

**MONDAY 29TH - 9.00AM—2PM**

**TUESDAY 30TH - 9.00AM—1PM**

**WEDNESDAY 31ST—9.00AM—1PM**

**THURSDAY 1ST JAN—CLOSED PAPERS OUT THE FRONT**

**THANK YOU ALL FOR THE CONTINUED SUPPORT  
AND SEE YOU AGAIN IN 2026**





# *Sing along, Xmas carols at Westonia*

Followed by childrens Xmas tree

**Where: Caravan park lawn**

**5:30pm**

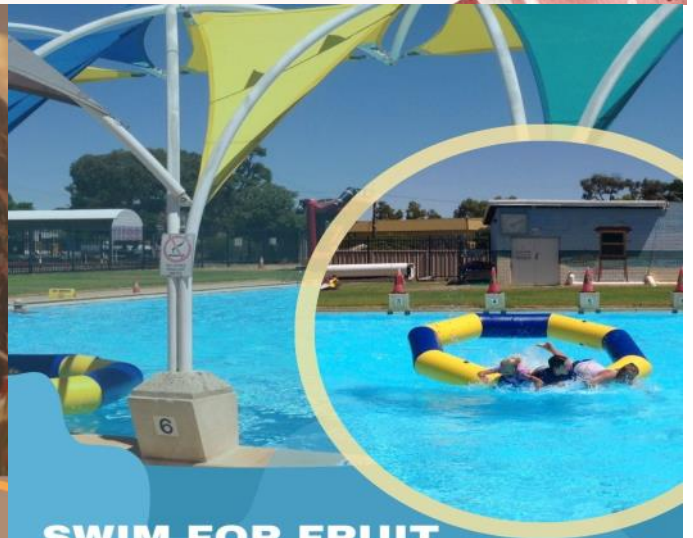
**12<sup>th</sup> December**

- Visit from Santa
- BYO nibbles, picnic and drinks
- Picnic rug, chairs
- Dress up, Wear Christmas shirts

Candle provided  
Everyones welcome



Working  
Group  
Meeting



## SWIM FOR FRUIT

**WESTONIA SWIMMING POOL**

**Every Saturday**



Swimming lessons, water safety education, and fun water games.

Children receive a healthy afternoon snack and fresh fruit after participating



|                    |      |               |
|--------------------|------|---------------|
| AGE                | COST | TIME          |
| 5 to 17 years old. | FREE | 1:00PM-2:00PM |



Wednesday 21st  
January 2026 @ 9:00am  
Old School

THERE WILL NO MEETING IN  
DECEMBER BUT WE WILL BE BACK IN  
JANURARY.  
MERRY CHRISTMAS AND HAPPY NEW  
YEAR



*Your local voice  
for Westonia!*

**HERE TO HELP**

✉ [lachlan.hunter@mp.wa.gov.au](mailto:lachlan.hunter@mp.wa.gov.au)

**Northam Office**

- ☎ (08) 9622 2871
- 📮 PO Box 92
- 📍 185 Fitzgerald St Northam

**Merredin Office**

- ☎ (08) 9041 1702
- 📮 PO Box 66
- 📍 Old Town Hall,  
Mitchell St, Merredin

**LACHLAN HUNTER MP**  
MEMBER FOR CENTRAL WHEATBELT



Authorised by L Hunter, 185 Fitzgerald St, Northam WA 6401

**Public Notice**

**Mains water supply cannot be guaranteed during a bushfire**

Water Corporation is prepared for bushfire season. However, we cannot guarantee that water pressure or water supply will be maintained in the event of a bushfire. Extreme demand, fire damage and power cuts can all result in a total loss of water.

If you plan to stay and defend your property during a bushfire, you must have your own independent water supply and pumping capability. You cannot rely on mains water.

Details and resources about how to prepare for bushfire season can be found at [mybushfireplan.wa.gov.au](http://mybushfireplan.wa.gov.au). For warnings and advice visit [emergency.wa.gov.au](http://emergency.wa.gov.au).

[watercorporation.com.au](http://watercorporation.com.au)



**NUNGARIN**

**Wheatbelt Markets**

**Sunday 7th December 2025**

8am to 12noon

Lots of stalls in the main street, the hall & the mall.

Ice Cream Van on site.

Sausage Sizzle.

FREE Train Rides & Ice Creams for the Kids.

Visit by Mother & Father Christmas.

Come and browse for that something special.

Stall Bookings: Call 0448244063 for a direct booking or email [nungarinwheatbeltmarkets@gmail.com](mailto:nungarinwheatbeltmarkets@gmail.com)

**Something for everyone at the Nungarin Wheatbelt Markets!!!**

**Like us on facebook**







presents the 2026  
Merredin & Districts  
Agricultural Show

Saturday  
28<sup>th</sup> March  
10am

# OUR TOWN OUR STORIES

## Writing Competition

Celebrate the stories, voices, and creativity of our district! Enter the Merredin Agricultural Show Writing Competition and share your unique perspective on life in our town and the Wheatbelt.

### Entry Categories

- Poetry
- Creative Non-Fiction
- Memoir
- Picture Book
- Fiction
- Photo Story

### Age Groups

- Junior Primary (Years 1-3)
- Upper Primary (Years 4-6)
- Lower Secondary (Years 7-9)
- Upper Secondary (Years 10-12)
- Open/Adult (18+)

**Entries Close:**  
**Sunday 1st**  
**March 2026**

**Prizes include cash, publication in the program and more!**

For submissions  
scan the QR code.  
For more info go to:



<https://www.merredinshow.com/writing-competition>

### Judging Panel includes:

**Children's author**  
James Foley

**YA and Children's author**  
Meg McKinlay

**Journalist and Novelist**  
David Allan-Petale

**Children's author**  
Norman Jorgensen

**University Lecturer and  
Novelist**  
Deborah Hunn

**Local Librarian**  
Wendy Porter





Wheatbelt Regional Cancer  
Prevention Coordinator  
**Cancer Council Western Australia**  
[RCPCWheatbelt@cancerwa.asn.au](mailto:RCPCWheatbelt@cancerwa.asn.au)

## Wheatbelt farmer becomes face of Christmas Appeal to support country cancer patients

Wheatbelt farmer, Gerard Hodges, is the face of Cancer Council WA's 2025 Christmas Appeal after a shock skin cancer diagnosis turned his life upside down.

The fit and healthy farmer first noticed what looked like a simple graze on his hand during the 2022 harvest season.

"Bumps and grazes aren't unusual for farmers, so I shrugged it off," Gerard said. "But it just didn't heal. One bandage turned into three."



When the Royal Flying Doctor Service came through town, Gerard had it checked. What was first thought to be a minor basal cell carcinoma turned out to be Stage 4 squamous cell carcinoma, an aggressive form of skin cancer that had already spread to his kidney and liver. Within days, Gerard was in Perth, unsure where he would stay or how long he would be away from the farm. After weeks in ICU fighting pneumonia, organ failure, and even surviving two cardiac arrests, he was told about Cancer Council WA's accommodation Lodges.

Since moving into Milroy Lodge in Shenton Park, Gerard has found more than just a place to stay, he has found peace in the gardens, comfort in the 24-hour support, and connection with others who understand what he is going through.

"I'm so proud to be the face of this year's Christmas Appeal," Gerard said.

"I encourage the WA community to get behind it and support this vital accommodation service for regional people like me."

This year alone the lodges have had almost 5,000 check-ins from country patients and carers. By donating to our Christmas Appeal, you're ensuring country cancer patients like Gerard have vital support when they need it most.

To donate to the Christmas Appeal visit [cancerwa.asn.au](https://cancerwa.asn.au).

For more information about Cancer Council WA Lodges and support services, visit [cancerwa.asn.au/cancer-support/get-support/regional-services](https://cancerwa.asn.au/cancer-support/get-support/regional-services) or call 13 11 20 for information and support.

**Every minute, every hour, every day.**



# Christmas Tiramisu

By Donna Hay

- To make the sugar syrup, heat a large non-stick frying pan over medium low heat. Add the caster sugar and water and cook for 4 minutes or until just thickened slightly. Add vanilla and stir to combine. Set aside to cool.
- To make the mascarpone cream, place the mascarpone, cream and icing sugar in a bowl and whisk until soft peaks form. Remove 1/5th off the cream and refrigerate until required. Add the torn raspberries to the remaining mascarpone cream and gently fold through.
- To assemble, line 2 x 21cm x 10cm loaf tin on both sides with non-stick baking paper+.
- Trim the biscuits so they fit snugly into the prepared tin. Quickly and lightly dip both sides of the biscuits into the vanilla syrup and layer into the base of the prepared tins. Top with spoonfuls of the raspberry mascarpone mixture and 1/3 cup (115g) of lemon curd in each tin. Repeat with the dipped biscuit and mascarpone layers. Fold over the excess baking paper to enclose and refrigerate for 4 hours or up to 24 hours.
- To serve, invert the tiramisus onto a serving plate or board. Spread a thin layer of the reserved mascarpone mixture over the sides of the tiramisus. Trim one end of the rounded biscuits so they have a flat base. Press the biscuits into the sides of the tiramisus. Top with raspberries and strawberries and dust with icing sugar. Slice into thick slices to serve. **Serves 10**



## INGREDIENTS

- 24 SAVOIARDI (SPONGE FINGER) BISCUITS
- 2/3 CUP (235G) STORE-BOUGHT LEMON CURD

## SUGAR SYRUP

- 3/4 CUP (165G) CASTER (SUPERFINE) SUGAR
- 1/3 CUP (80ML) WATER
- 2 TEASPOONS VANILLA EXTRACT

## MASCARPONE CREAM

- 2 CUPS (500ML) CREAM
- 750G MASCARPONE
- 1/3 CUP (55G) ICING (CONFECTIONER'S) SUGAR
- 350G RASPBERRIES, TORN IN HALF

## TO SERVE

- 36 SAVOIARDI (SPONGE FINGER) BISCUITS, EXTRA
- EXTRA RASPBERRIES, HALVED
- STRAWBERRIES AND ICING (CONFECTIONER'S) SUGAR FOR DUSTING



# 2025 December



| Monday                                     | Tuesday                          | Wednesday  | Thursday  | Friday                              | Saturday | Sunday |
|--|----------------------------------|--|---|-------------------------------------|----------|--------|
| 01<br>Early Morning Swim 6-7am             | 02<br><b>S.C.R.A.B.B.L.E</b><br> | 03<br>Early Morning Swim 6-7am                         | 04<br><b>B.O.N.G.O</b>  | 05<br>Early Morning Swim 6-7am      | 06       | 07     |
| 08<br>Dr Olga day Early morning swim 6-7am | 09<br><b>S.C.R.A.B.B.L.E</b>     | 10<br>Early Morning Swim 6-7am                         | 11<br><b>B.O.N.G.O</b>  | 12<br>Sing along Xmas carols 5:30pm | 13       | 14     |
| 15<br>Early Morning Swim 6-7am             | 16<br><b>S.C.R.A.B.B.L.E</b><br> | 17<br>Early Morning Swim 6-7am                         | 18<br><b>B.O.N.G.O</b><br>Robyns Beauty Salon Shire Council Meeting | 19<br>Early Morning Swim 6-7am      | 20       | 21     |
| 22   | 23                               | 24<br><b>SHIRE OFFICE CLOSED 12PM, REOPENS 5TH JAN</b> | 25<br><b>MERRY CHRISTMAS!!</b>                                      | 26                                  | 27       | 28     |
| 29   | 30                               | 31   | 01  | 02                                  | 03       | 04     |
| 05   | 06                               | Notes:  Work out with Emilie                           |   | Early Morning Swim 6-7am            |          |        |

